

Shirley accepts

Navy chief petty officer John Michels put a sign in his apartment window in Waukegan. Shirley Parreant, who works across the street, answered. And so they'll be married Aug. 17. They've been going together about five months. (AP Wirephoto)

22 from Alton area get degrees at WIU

Twenty two area residents have received their degrees from Western Illinois University at Macomb.

They are:
ALTON — William Heiens, George Dreith and Cynthia Judy.

BETHALTO — Joseph Schoppet.
BRUSSELS — Karen Carlberg.

CARLINVILLE — Keith Morehead and Louis Schreiter.
CARLYLE — Gary Wurm.
CARROLLTON — Linda Eicken and Elaine Tapen.

EDWARDSVILLE — Linda German.

ELDRED — Catherine Carter and Christine Carter.

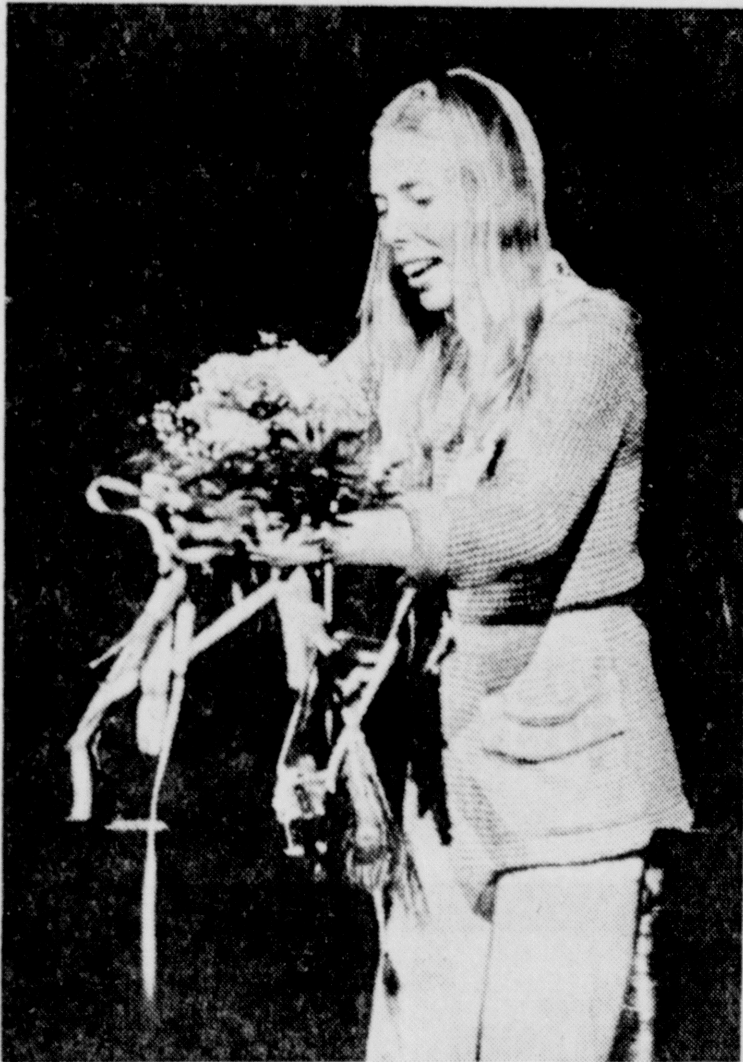
GODFREY — Michael Andre, Dennis Fleming, Devin Randolph and James Schrimpf.

GOLDEN EAGLE — James Nolte.
GREENFIELD — Gregory Ross.

HETTICK — David Reznicek.

JERSEYVILLE — Walter Dawkins.

Joni Mitchell... the star this time



Joni Mitchell returns to MRF

By JILL WILLIAMS
Telegraph Reviewer

Four years ago Joni Mitchell performed at the Mississippi River Festival and many people walked out before she had finished her set.

Arlo Guthrie was the main attraction that night. Alice's Restaurant had just been released and it was he they had come to see.

Last night however, was a different story. A crowd of 9,500 waited for more than an hour for Mitchell before the concert because of a power failure at the site. A 10-minute intermission between sets also stretched into 30 and still they waited.

Finally, the house lights dimmed and the crowd was hushed into blackness. A group who has been touring and recording with Mitchell for a year took the stage and left the crowd open-mouthed at their performance. Tom Scott and the L.A. Express are former studio musicians with a jazz, funk, oriented sound.

The group seems to have influenced Mitchell's style somewhat, for her songs, old and new were jazzed up with extra frills and trills in the right places.

Mitchell performed "Free Man in Paris" and "People's Parties" from her new album, "Court and Spark" which she recorded with the L.A. Express.

Strolling from guitar to piano and back again Mitchell's stance mellowed as people from the audience urged her to "talk to them."

She then told a story of her travels while on tour and of some of the horrible places she and the band had stayed in. "One of the cells, oops, I mean rooms—Freudian slip there—was so bad, one of the roadies shut the curtains to improve its' appearance," she said.

She also remarked how a power failure wasn't so bad, because in most of the cities she had been booked at while on tour had been rained out.

A man from the audience yelled, "I love you, Joni!" Someone in the front row stretched up a bouquet of flowers to the lady and she placed them on her mike stand.

Those two things were perhaps symbolic of the woman herself. An artist who paints pictures but also who paints with words, who expresses herself only as a poet can, who touches only as a lover can. This is what Joni Mitchell is. If you listen very closely she will tell you.

Big & Tall Men's
Clothes Department
Sizes Up to 60

Robert Hall
2811 Godfrey Road

Meany says: Nixon bad from now on

CHICAGO (AP) — President Nixon would be a lame duck president unable to deal with the nation's economic woes even if acquitted by the Senate, says AFL-CIO President George Meany.

Speaking to newsmen Tuesday, Meany once again urged President Nixon to resign and allow the executive branch of the government to function. "We're in a recession now

and approaching a disastrous depression," he said. "And one of the contributing causes is the lack of confidence in this country in the presidency."

Citing House impeachment proceedings, preparations for a Senate trial and the trial itself, Meany said, "for the next four months the executive branch will be crippled."

Meany said the executive branch lacks direction and is

trying to operate with too many important jobs unfilled.

"We don't have a functioning executive branch," he said. "The President is not functioning as he should be."

In view of Monday's Watergate revelations, Meany said there seems to be no end to the scandal. Monday's White House disclosures, he said, show again that if the President does not resign he

ALTON TELEGRAPH Wed., August 7, 1974 C-7

should be impeached and tried by the Senate.

The labor head predicted that the Republican party will lose as many as 60 seats in the House if Nixon is still in office

this fall.

In a business session, the executive council urged that G.I. Bill benefits be increased 18 per cent and that other veteran services be improved.

**JIM BRYANT'S
DISCOUNT PRODUCE MARKET**
3 CONVENIENT LOCATIONS TO SERVE YOU ALL STORES—OPEN
★ ROUTE NO. 140, COTTAGE HILLS — PH. 259-9828 MON. THRU FRI. 9 A.M. to 9 P.M.
★ 3037 GODFREY RD., GODFREY, ILL. — PH. 466-9741 SAT. & SUN. 9 A.M. TO 7 P.M.
★ 60 W. EDWARDSVILLE RD., WOOD RIVER — PH. 254-7103

COME SAVE WITH US!
U.S. NO. 1
RED POTATOES 10 Lb. 89¢
SEALTEST—THE BEST
2% HOMO MILK GAL. \$1¹⁵
JUG
CALIFORNIA—ICEBERG
LETTUCE 4 BIG HEADS \$1⁰⁰
U.S. NO. 1
RUSSETT POTATOES 10 Lb. 99¢
WE SELL TICKETS
ARKANSAS—FREESTONE
PEACHES 3 LBS. \$1⁰⁰
PASCAL
CELERY . . . 19¢ Ea.
GOOD—GREEN
CABBAGE . . 10¢ Lb.
1 LB. CELLO
CARROTS . . 19¢ Pkg.
YELLOW—MEDIUM
ONIONS 3 LB. CELLO BAG 39¢
1 LB. CELLO
RADISHES . 25¢ Pkg.
Nectarines 3 Lbs. \$1⁰⁰
OPEN — 7 DAYS A WEEK • WE ACCEPT
OPEN MON. THRU FRI. 9 A.M. TO 9 P.M.—SAT. & SUN. 9 A.M. TO 7 P.M. FOOD STAMPS

**Buy Low
NOW
For Next
Season**

**ONE TIME A YEAR
GENERAL ELECTRIC AIR
ELECTRIC CONDITIONER**

CLEARANCE SALE

PRICES NEVER SO LOW				WAS	NOW
	2 AGKE 505 FDX	5,000 BTU	115 Volt . . .	169.95	122.65
	2 AGKE 506 FCX	6,000 BTU	115 Volt . . .	209.95	138.60
	2 AGKE 806 FBX	6,000 BTU	115 Volt . . .	209.95	138.60
	1 AGAE 906 LAX	5,500 BTU	115 Volt . . .	229.95	159.50
	2 AGKE 508 AAX	8,000 BTU	115 Volt . . .	229.95	170.95
	1 AGAE 608 AAX	8,000 BTU	115 Volt . . .	249.95	187.00
	2 AGCE 510 AAX	10,000 BTU	115 Volt . . .	289.95	187.00
	7 AGCE 811 AAX	10,500 BTU	115 Volt . . .	279.95	203.50
	2 AGCE 812 DAX	11,500 BTU	115 Volt . . .	299.95	217.80
	2 AGFE 812 ABX	12,000 BTU	115 Volt . . .	339.95	237.60
	1 AGDE 814 AAX	14,000 BTU	115 Volt . . .	389.95	247.50
	1 AGDE 914 ACX	14,000 BTU	115 Volt . . .	389.95	284.90
	2 AGDS 618 BAX	18,000 BTU	230 Volt . . .	359.95	269.50
	1 AGDS 818 DBX	18,000 BTU	230 Volt . . .	369.95	266.20
	1 AGDS 821 DBX	21,000 BTU	230 Volt . . .	419.95	321.20
	2 AGDS 824 DCX	24,000 BTU	230 Volt . . .	479.95	341.00

**FACTORY
WARRANTY
INCLUDED**

**ONE
SIX FLAGS
TICKET
FREE
WITH PURCHASE OF GE
APPLIANCE OR TV
OVER \$200⁰⁰**

**DELIVERY
AND
INSTALLATION
EXTRA**

FREE PARKING AT

JIM JONES ASSOCIATES
— AND —
1411 TROY ROAD—DIAL 656-7712—EDWARDSVILLE

Eureka Vacuums!
BRAND NAME BUYS!

EUREKA UPRIGHT VAC
2-position Dial-A-Nap® front end rug adjustment. Increased efficiency. Disposable dust bag. Beater bar brush roll loosens deep-down dirt. Beats! Sweeps! Step-on toe switch.

**YOUR CHOICE
\$54⁹⁵**

CANISTER WITH TOOLS
9-piece tool set with convenient Tool-Pak carrier. 3 wands. Dust brush. Vinyl hose with power adjuster. Upholstery nozzle. Floor & wall brush. Crevice tool. Deep cleaning rug nozzle. 2-peak H.P.

Alton Store Only
2600 Beltline At Washington Ave.
Division of May Department Stores